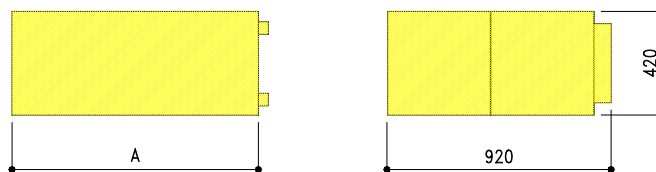
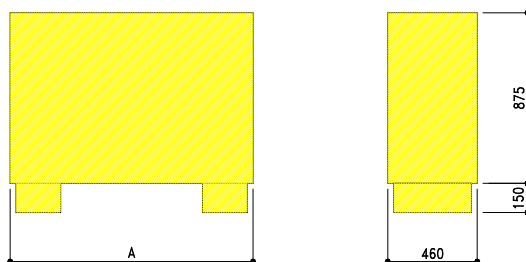
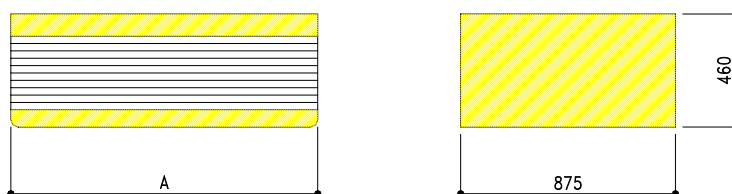
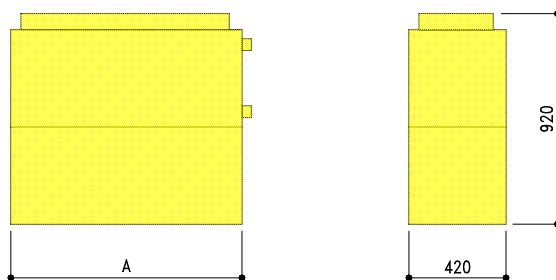


### Serie "TO" - Dati nominali / Nominal data V230/1/50 Hz

Fino a 150 Pa	Up to 150 Pa	Speed	TO	10	15	20	25	30	35	50	60
Portata d'aria nominale (a 0-10Pa disponibili) con filtro standard G3-EU3	Nominal air flow (at 0-10Pa available) with std filter G3-EU3	High	m <sup>3</sup> /h	1550	1780	2315	3290	3700	3955	5680	6815
		Med	m <sup>3</sup> /h	1150	1170	2025	2380	3395	3675	5285	6285
		Low	m <sup>3</sup> /h	725	755	1525	1540	2850	3200	4600	5280
<b>Resa freddo-caldo / Cooling-Heating capacity 3-rows 16 tubes coils</b>											
Resa frigorifera totale aria 27°C 50% acqua 7/12°C	Total cooling capacity air 27°C 50% water 7/12°C	High	kW	7,94	10,84	13,92	19,26	22,28	24,13	32,14	37,55
		Med	kW	5,97	7,93	12,64	15,29	20,95	22,90	30,56	23,71
		Low	kW	3,94	5,29	9,77	10,32	18,45	20,71	27,70	20,90
Resa sensibile	Sensible capacity	High	kW	5,48	7,13	9,23	12,75	14,67	15,94	21,41	25,13
		Med	kW	4,23	5,19	8,36	10,05	13,78	15,11	20,33	23,71
		Low	kW	2,86	3,62	6,56	6,90	12,09	13,62	18,37	20,90
Portata d'acqua	Water flow rate	Med	l/h	1027	1364	2174	2629	3605	3940	5257	6106
Perdita carico lato acqua	Water pressure drops	High	kPa	16	34	31	33	46	33	37	35
		Med	kPa	9,65	12,27	15,94	22,03	25,26	27,48	37,13	43,67
		Low	kPa	7,67	8,88	14,41	17,25	23,68	26,00	35,20	41,16
Riscaldamento aria 20°C acqua 50°C stessa portata del freddo	Heating capacity air 20°C water 50°C water flow rate as cooling mode	High	kW	7,67	8,88	14,41	17,25	23,68	26,00	35,20	41,16
		Med	kW	5,34	6,20	11,51	12,16	20,71	23,38	31,73	36,16
		Low	kW	5,34	6,20	11,51	12,16	20,71	23,38	31,73	36,16
Portata d'acqua	Water flow rate	Med	l/h	1027	1364	2174	2629	3605	3940	5257	6106
Perdita carico lato acqua	Water pressure drops	High	kPa	13,0	27,5	24,9	26,9	37,3	26,8	30,0	28,2
		Med	kPa	16,40	20,54	26,75	36,94	42,29	46,05	62,37	73,47
		Low	kPa	13,13	14,83	24,15	28,86	39,62	43,54	59,11	69,20
Riscaldamento aria 20°C acqua 70/60°C	Heating capacity air 20°C water 70/60°C	High	kW	9,19	10,39	19,35	20,42	34,63	39,12	53,23	60,72
		Med	kW	11,50	12,99	21,15	25,27	34,70	38,13	51,76	60,61
		Low	kW	9,19	10,39	19,35	20,42	34,63	39,12	53,23	60,72
Portata d'acqua	Water flow rate	Med	l/h	1150	1299	2115	2527	3470	3813	5176	6061
Perdita carico lato acqua	Water pressure drops	High	kPa	14,6	23,2	21,8	23,0	32,1	23,2	26,8	25,6
		Med	kPa	11,45	14,27	18,64	25,91	29,47	32,26	44,12	52,31
		Low	kW	8,73	9,69	16,67	19,65	27,44	30,33	41,59	48,97
Resa sensibile	Sensible capacity	High	kW	7,51	9,19	12,00	16,73	19,00	20,70	28,53	33,88
		Med	kW	5,74	6,26	10,70	12,63	17,66	19,44	26,85	31,66
		Low	kW	3,70	4,10	8,16	8,25	15,13	17,25	23,87	27,32
Portata d'acqua	Water flow rate	Med	l/h	1502	1668	2866	3381	4720	5218	7153	8422
Perdita carico lato acqua	Water pressure drops	High	kPa	28	27	38	32	41	44	48	51
		Med	kPa	12,84	15,45	20,15	28,17	31,95	34,62	48,13	57,23
		Low	kPa	9,91	10,62	17,91	21,19	29,64	32,45	45,22	53,38
Riscaldamento aria 20°C acqua 50°C stessa portata del freddo	Heating capacity air 20°C water 50°C water flow rate as cooling mode	High	kW	9,91	10,62	17,91	21,19	29,64	32,45	45,22	53,38
		Med	kW	6,56	7,10	13,87	14,26	25,38	28,70	40,07	45,88
		Low	kW	6,56	7,10	13,87	14,26	25,38	28,70	40,07	45,88
Portata d'acqua	Water flow rate	Med	l/h	1502	1668	2866	3381	4720	5218	7153	8422
Perdita carico lato acqua	Water pressure drops	High	kPa	22,9	21,4	30,5	26,1	32,7	35,4	38,8	41,3
		Med	kPa	21,48	25,73	33,57	46,95	53,24	57,63	80,24	95,43
		Low	kPa	16,58	17,72	29,83	35,30	49,37	54,01	75,38	88,99
Riscaldamento aria 20°C acqua 70/60°C	Heating capacity air 20°C water 70/60°C	High	kW	11,00	11,86	23,14	23,82	42,28	47,75	66,76	76,44
		Med	kW	14,52	15,52	26,13	30,92	43,24	47,31	66,02	77,94
		Low	kW	11,00	11,86	23,14	23,82	42,28	47,75	66,76	76,44
Portata d'acqua	Water flow rate	Med	l/h	1452	1552	2613	3092	4324	4731	6602	7794
Perdita carico lato acqua	Water pressure drops	High	kPa	19,8	17,3	23,9	20,5	25,8	27,4	31,0	33,2
		Med	kPa	8,00	10,87	14,20	19,20	22,16	24,97	31,80	37,17
		Low	kW	5,44	6,83	11,43	12,86	19,41	22,39	28,65	32,78
Portata d'acqua	Water flow rate	Med	l/h	606	766	1162	1427	1859	2107	2689	3130
Perdita carico lato acqua	Water pressure drops	High	kPa	10,7	20,6	17,2	29,0	24,1	34,0	31,6	45,5
		Med	kPa	10,7	20,6	17,2	29,0	24,1	34,0	31,6	45,5
		Low	kPa	10,7	20,6	17,2	29,0	24,1	34,0	31,6	45,5
<b>Dati generali / General data</b>											
Potenza nominale	Motor nominal power	IP22	W	147	147	245	2*147	2*245	2*245	3*245	3*245
Potenza assorbita	Absorbed motor power	Max	W	250	286	374	540	770	860	970	1120
Assorbimento	Absorbed motor current	Max	A	1,13	1,27	1,85	2,40	4,06	4,16	4,90	5,60
Lunghezza batteria x H400	Length of coil x H400	L	mm	400	600	800	1000	1200	1400	1600	1800
Superficie frontale	Coil face area	3R	m <sup>2</sup>	0,16	0,24	0,32	0,40	0,48	0,56	0,64	0,72
Contenuto d'acqua	Coil water content	3R	lt	1,47	2,22	2,94	3,69	4,43	5,16	5,90	6,64
El.Elettrico standard	Std electric heaters	V230	W	700	1000	1500	2000	2500	3000	4000	5000
El.Elettrico alta capacità	High capacity el.heaters	V230	W	1000	1200	2000	2500	3000	4000	5000	6000
Pressione sonora (Lp)	Sound Pressure Levels (Lp)	Med	dB(A)	39,3	38,0	46,2	43,0	46,3	50,9	50,2	51,4

**Dimensioni/Dimensions (mm) - Pesi indicativi/Indicative weight (kg)**
**TO-TOH****TIM****TOM****TI-TIH**

Mod. Gr/Size	TO-TOH		TIM		TOM		TI-TIH	
	A mm	kg	A mm	kg	A mm	kg	A mm	kg
<b>10</b>	600	46	1050	56	1050	57	600	45
<b>15</b>	800	55	1250	68	1250	70	800	54
<b>20</b>	1000	82	1450	81	1450	83	1000	80
<b>25</b>	1200	88	1650	100	1650	102	1200	86
<b>30</b>	1400	96	1850	122	1850	125	1400	94
<b>35</b>	1600	106	2050	140	2050	146	1600	103
<b>50</b>	1800	135	---	---	---	---	1800	132
<b>60</b>	2000	176	---	---	---	---	2000	170